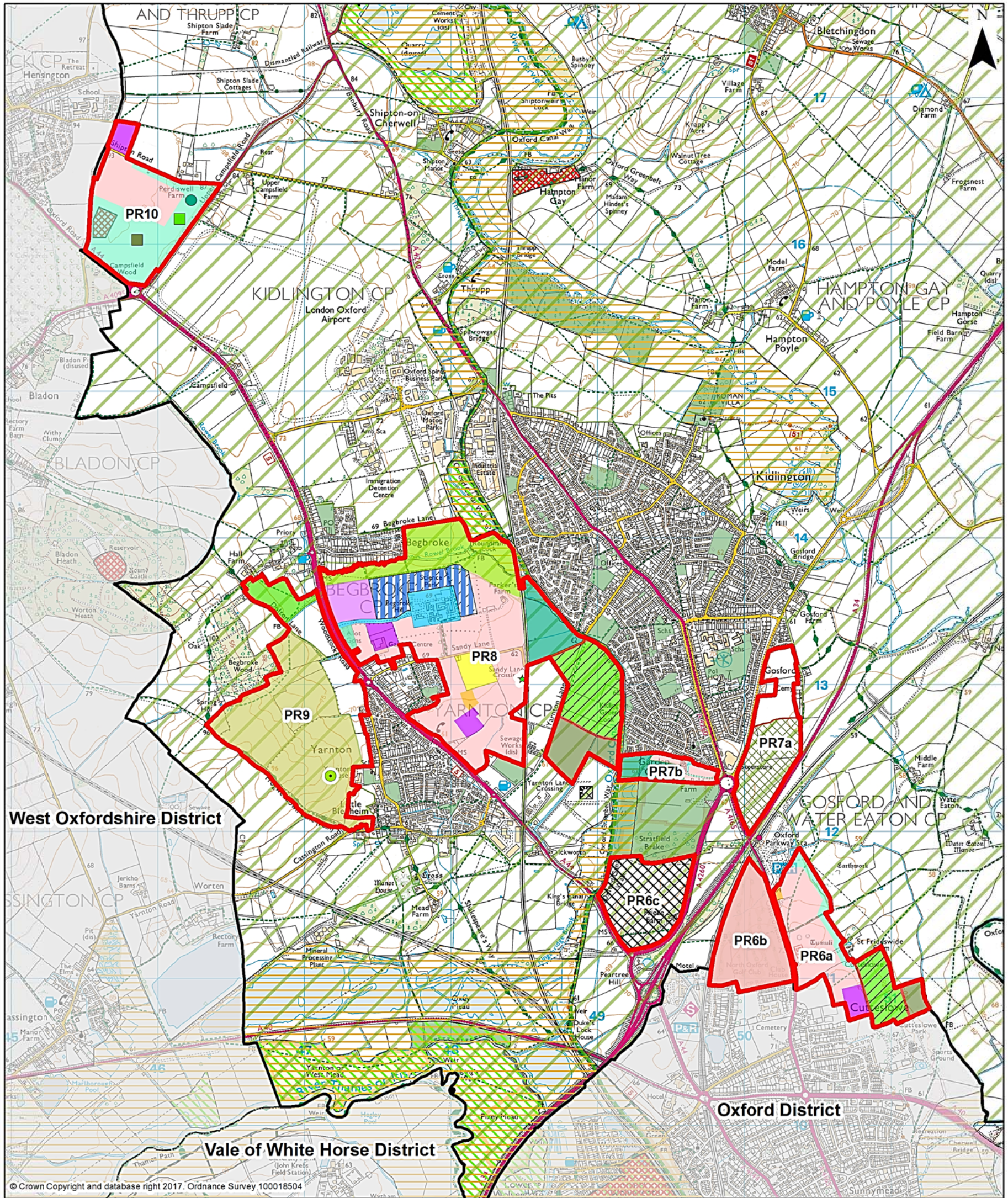
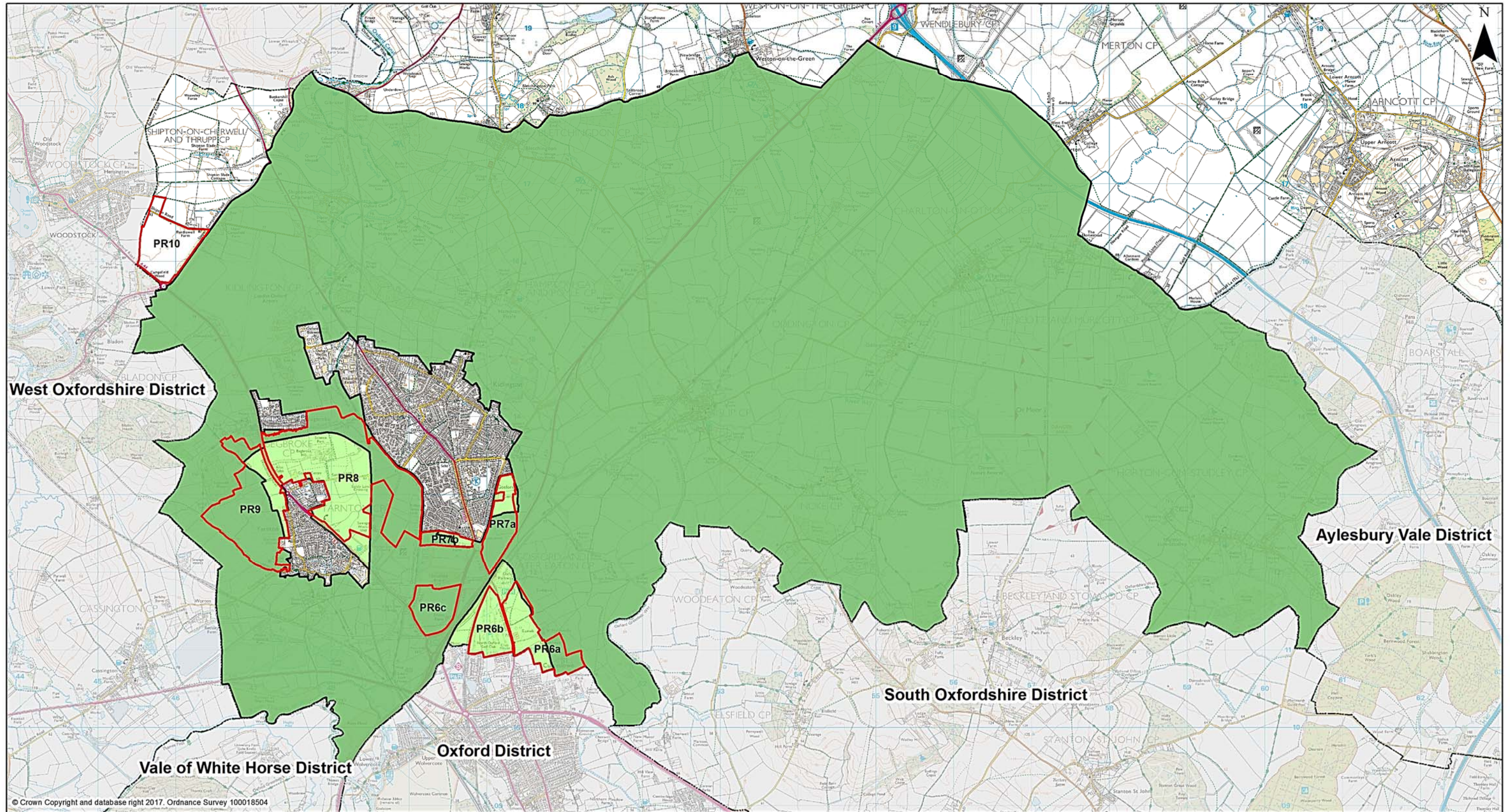


Policies Map






Key			
	Strategic Development Sites		Former Landfill Site
	Residential		Green Space
	Land Reserved for Employment		Local Nature Reserve
	Primary School Use		Nature Conservation Area
	Secondary School Use		Parkland
	Local Centre		Retained agricultural land
	Existing Begbroke Science Park		Reserved Land for Railway Station/Halt
			Community Woodland
			Public Access Land
	Outdoor Sports Provision		Reserved site for replacement for Golf Course
	Revised Green Belt		Scheduled Ancient Monument
	Conservation Target Areas		Sites of Special Scientific Interest
	Existing Green Space		Historic Parks and Gardens
	Community Woodland		Oxford Canal Trail
	Local Nature Reserve		Nature Conservation Area
	Nature Conservation Area		Retained agricultural land
	Retained agricultural land		Cherwell District



© Crown Copyright and database right 2017. Ordnance Survey 100018504

Key

-  Proposed Site Boundaries
-  Revised Green Belt
-  Green Belt to be removed

**Partial Review of the Cherwell Local Plan 2011-2031
(Part 1): Oxford's Unmet Housing Needs**

Proposed Submission

Appendix 4: Draft Infrastructure Schedule

***DRAFT FOR EXECUTIVE
19 JUNE 2017***

No.	Projects	Main aim	Priority Critical Necessary Desirable	Phasing St 2018- 2021 Mt 2021 - 2026 Lt 2026 - 2031	Costs (where known)	Funding (where known)	Main Delivery Partners	Policy links (LP1, LTP & Emerging LP1 PR Policies)	LP1 PR site policy	Source	Delivery status
Transport & movement											
1.	Explore potential for a new rail station/halt between Kidlington and Begbroke	Identify potential for future new rail services and stations that reduce the reliance on private car for inter urban travel	Desirable	Long term	TBC	TBC	Network Rail, OCC, Rail providers, Begbroke Science Park/Oxford University	LP1: Improved Transport and Connections (SLE4) LP1 PR: Sustainable Transport (PR4a) LP1 PR: Infrastructure Delivery (PR11)	All LP1 PR sites	LP1 PR representations on behalf of OU	
2.	Expansion of Water Eaton P&R	Reduce the proportion and overall number of car journeys and help deliver the transport changes provided for by the Oxford Transport Strategy.	Necessary	Long term	TBC	TBC	OCC, bus service providers, private developers	LTP4 LP1: Improved Transport and Connections (SLE4) LP1 PR: Sustainable Transport (PR4a) LP1 PR: Infrastructure Delivery (PR11)	All LP1 PR sites,	OCC OTS	
3.	Explore potential for a P&R at London Oxford Airport	Reduce the proportion and overall number of car journeys and help deliver the transport changes provided for by the Oxford Transport Strategy.	Necessary	Long term	TBC	TBC	OCC, bus service providers, private developers	LTP4 LP1: Improved Transport and Connections (SLE4) LP1 PR: Sustainable Transport (PR4a) LP1 PR: Infrastructure Delivery (PR11)	All LP1PR sites	OCC OTS	
4.	Bus Lane improvements along the A4260/A4165	Reduce the proportion and overall number of car journeys . and help deliver the transport changes	Critical	Medium term	TBC	TBC	OCC, bus service providers, private developers	LTP4:OTS LP1: Improved Transport and Connections (SLE4) LP1 PR: Sustainable Transport (PR4a) LP1 PR: Infrastructure	All LP1PR sites	OCC OTS TA (ITP)	

No.	Projects	Main aim	Priority Critical Necessary Desirable	Phasing St 2018- 2021 Mt 2021 - 2026 Lt 2026 - 2031	Costs (where known)	Funding (where known)	Main Delivery Partners	Policy links (LP1, LTP & Emerging LP1 PR Policies)	LP1 PR site policy	Source	Delivery status	
		provided for by the Oxford Transport Strategy.						Delivery (PR11)				
4a	Improved bus lane provision on the A4165 between Kidlington roundabout and past the new housing site	Reduce the proportion and overall number of car journeys . and help deliver the transport changes provided for by the Oxford Transport	Critical	Medium term	TBC	TBC	OCC, bus service providers, private developers	LTP4:OTS LP1: Improved Transport and Connections (SLE4) LP1 PR: Sustainable Transport (PR4a)	All LP1PR sites			
4b	A4260 – southbound bus lane from The Moors to Benmead Road		Critical	Medium term	TBC	TBC			All LP1PR sites			
4c	A4260 Southbound bus lane from Bicester Road/A4260 junction to Kidlington roundabout		Critical	Medium term	TBC	TBC			OCC, bus service providers, private developers		LTP4:OTS LP1: Improved Transport and Connections (SLE4) LP1 PR: Sustainable Transport (PR4a)	All LP1PR sites
4d	Northbound bus lane Summerhill Road to Davenant Road		Critical	Medium term	TBC	TBC						All LP1PR sites
4e	Southbound bus lane from Rawlinson road to St Margaret's Road		Critical	Medium term	TBC	TBC						All LP1PR sites
5	Signalised junctions along the A4260/A4165 corridor to improve bus movements	Reduce the proportion and overall number of car journeys and help deliver the transport changes provided for by the Oxford Transport Strategy.	Critical	Medium term	TBC	TBC	OCC, bus service providers, private developers	LTP4:OTS LP1: Improved Transport and Connections (SLE4) LP1 PR: Sustainable Transport (PR4a) LP1 PR: Infrastructure Delivery (PR11)	All LP1PR sites	OCC OTS TA (ITP)		
5a	A4260/Bicester Road Signalised junction – RT detection		Critical	Medium term	TBC	TBC			All LP1PR sites			
5b	A4260/Lyne Road Signalised junction - RT detection		Critical	Medium term	TBC	TBC			OCC, bus service providers, private developers		LTP4:OTS LP1: Improved Transport and Connections (SLE4) LP1 PR: Sustainable Transport (PR4a) LP1 PR: Infrastructure Delivery (PR11)	All LP1PR sites
5c	Langford Lane/A4260 junction improvements with bus lanes on some approaches		Critical	Medium term	TBC	TBC						All LP1PR sites
6	Bus Lane improvements along the A44/A4144		Reduce the proportion and overall number of car journeys	Critical	Medium term	TBC						TBC

No.	Projects	Main aim	Priority Critical Necessary Desirable	Phasing St 2018- 2021 Mt 2021 - 2026 Lt 2026 - 2031	Costs (where known)	Funding (where known)	Main Delivery Partners	Policy links (LP1, LTP & Emerging LP1 PR Policies)	LP1 PR site policy	Source	Delivery status
6a	Southbound bus lane on A44 from the new southern exit from East Yarnton (Begbroke) through to Loop Farm Roundabout	and help deliver the transport changes provided for by the Oxford Transport Strategy.	Critical	Medium term	TBC	TBC		LP1 PR: Sustainable Transport (PR4a) LP1 PR: Infrastructure Delivery (PR11)	PR8 PR9 PR10	OCC OTS TA (ITP)	
6b	Southbound bus lane on A44, Langford Lane to Spring Hill junction		Critical	Medium term	TBC	TBC	OCC, bus service providers, private developers	LTP4:OTS LP1: Improved Transport and Connections (SLE4) LP1 PR: Sustainable Transport (PR4a) LP1 PR: Infrastructure Delivery (PR11)	PR8 PR9 PR10	OCC OTS TA (ITP)	
6c	Extend Northbound bus lane on Woodstock Road to Bainton Road (currently stops at Moreton Road)		Critical	Medium term	TBC	TBC		PR8 PR9 PR10	OCC OTS TA (ITP)		
6d	Northbound bus lane on A44 between Langford Lane and Bladon Roundabout, Southbound bus lane from approximately 200m south of Bladon roundabout to Langford Lane		Critical	Medium term	TBC	TBC		PR8 PR9 PR10	OCC OTS TA (ITP)		
7	4 buses per hour service between Oxford and Begbroke routed Land East of the A44 development site (A44/A4144 corridor)	Reduce the proportion and overall number of car journeys and help deliver the transport changes provided for by the Oxford Transport Strategy.	Critical	Medium term	TBC	TBC		OCC, bus service providers, private developers	LP1: Improved Transport and Connections (SLE4) LP1 PR: Sustainable Transport (PR4a) LP1 PR: Infrastructure Delivery (PR11)	PR8	OCC OTS TA (ITP)
8	Junction improvements facilitating cross-corridor bus movements (A44 to/from A4260)	Reduce the proportion and overall number of car journeys and help deliver the transport changes	Critical	Medium term	TBC	TBC	OCC, bus service providers, private developers	LTP4:OTS LP1: Improved Transport and Connections (SLE4) LP1 PR: Sustainable Transport (PR4a) LP1 PR: Infrastructure Delivery (PR11)	All LP1 PR sites	OCC OTS TA (ITP)	
8a	Left turn bypass lane from A4095 Upper Campsfield Road to A44		Critical	Medium term	TBC	TBC		All LP1 PR sites	OCC OTS		

No.	Projects	Main aim	Priority Critical Necessary Desirable	Phasing St 2018- 2021 Mt 2021 - 2026 Lt 2026 - 2031	Costs (where known)	Funding (where known)	Main Delivery Partners	Policy links (LP1, LTP & Emerging LP1 PR Policies)	LP1 PR site policy	Source	Delivery status
8b	Bus only left turn filter A44 to Langford Lane	provided for by the Oxford Transport Strategy.	Critical	Medium term	TBC	TBC		Delivery (PR11)	All LP1 PR sites	TA (ITP)	
8c	Signalising A4095 Upper Campsfield Road/A4260 junction		Critical	Medium term	TBC	TBC	OCC, bus service providers, private developers		All LP1 PR sites	OCC OTS	
8d	Upgrade of outbound bus stop on A4165 opposite Parkway		Critical	Medium term	TBC	TBC			All LP1 PR sites	TA (ITP)	
9	Cycle super highway	Reduce the proportion and overall number of car journeys and help deliver the transport changes provided for by the Oxford Transport Strategy.	Critical	Medium term	TBC	TBC	OCC private developers	LTP4:OTS LP1: Improved Transport and Connections (SLE4) LP1 PR: Sustainable Transport (PR4a) LP1 PR: Infrastructure Delivery (PR11)	All LP1 PR sites	TA (ITP)	
9a	Cycle super highway along the A4260/A4165 to Oxford Parkway		Critical	Medium term	TBC	TBC	OCC private developers				
9b	Cycle super highway along A4165 from Oxford Parkway to Oxford city centre		Critical	Medium term	TBC	TBC	OCC private developers				
10.	Sandy Lane - ped+cycle new link over railway	Improve sustainable cross corridor connections between the A44 and the A4260	Critical	Medium term	TBC	TBC	OCC private developers	LP1: Improved Transport and Connections (SLE4) LP1 PR: Sustainable Transport (PR4a) LP1 PR: Infrastructure Delivery (PR11)	PR8	OCC TA (ITP)	
11.	Cycle improvements along the A44 to A34 enabling improved cycling facilities to link onto planned improvements to Pear Tree Roundabout and cycle route along Woodstock Road (south of the A34) into Oxford (Shared Public Path improvements and new provision)	Reduce the proportion and overall number of car journeys and help deliver the transport changes provided for by the Oxford Transport Strategy.	Critical	Medium term	TBC	TBC	OCC private developers	LTP4:OTS LP1: Improved Transport and Connections (SLE4) LP1 PR: Sustainable Transport (PR4a) LP1 PR: Infrastructure Delivery (PR11)	PR10 PR9 PR8	OCC TA (ITP)	
12.	Public Realm improvements on the A4260 between Benmead Road and	Integration of land use and transport in response to	Desirable	Medium term	TBC	TBC	OCC private developers	LTP4:OTS LP1: Improved Transport and Connections (SLE4)	All LP1 PR sites	OCC TA (ITP)	

No.	Projects	Main aim	Priority Critical Necessary Desirable	Phasing St 2018- 2021 Mt 2021 - 2026 Lt 2026 - 2031	Costs (where known)	Funding (where known)	Main Delivery Partners	Policy links (LP1, LTP & Emerging LP1 PR Policies)	LP1 PR site policy	Source	Delivery status
	Yarnton Road	provide safe and attractive environments particularly in and around settlement centres						LP1 PR: Sustainable Transport (PR4a) LP1 PR: Infrastructure Delivery (PR11) LP1 PR: Infrastructure LP1 PR: Kidlington centre (PR4b) Kidlington Masterplan			
12a	20mph zone in centre of Kidlington on A4260 between Lyne Road and Sterling Approach	Integration of land use and transport in response to provide safe and attractive environments particularly in and around settlement centres	Desirable	Medium term	TBC	TBC	OCC private developers		All LP1 PR sites	OCC TA (ITP)	
13	Pedestrian/Cycle bridges	Improving sustainable transport accessibility and active travel	Critical	Medium term	TBC	TBC	OCC private developers	LTP4:OTS LP1: Improved Transport and Connections (SLE4) LP1 PR: Sustainable Transport (PR4a) LP1 PR: Infrastructure Delivery (PR11) LP1 PR: Infrastructure	N/A	N/A	
13a	Pedestrian/Cycle bridge over the Oxford Canal and Railway		Critical	Medium term	TBC	TBC	OCC private developers		PR8	TA (ITP)	
13b	Sandy Lane Level Crossing pedestrian/cycle bridge		Critical	Medium term	TBC	TBC	OCC private developers			OCC TA (ITP)	
13c	Pedestrian/Cycle bridge over the Oxford Canal linking Stratfield Farm (PR7b) to Land East of the A44 (PR8)		Critical	Medium term	TBC	TBC	OCC private developers		PR7b PR8	OCC TA (ITP)	
13d	Upgrade existing footbridge over the railway linking to Northern Gateway to pedestrian/cycle/Wheelchair accessible providing links to Northern Gateway		Critical	Medium term	TBC	TBC	OCC private developers		PR6b	OCC TA (ITP)	
13e	Kidlington roundabout pedestrian/cycle bridge	Critical	Medium term	TBC	TBC	OCC private developers		PR6a PR6b	OCC		

No.	Projects	Main aim	Priority Critical Necessary Desirable	Phasing St 2018- 2021 Mt 2021 - 2026 Lt 2026 - 2031	Costs (where known)	Funding (where known)	Main Delivery Partners	Policy links (LP1, LTP & Emerging LP1 PR Policies)	LP1 PR site policy	Source	Delivery status
	over Frieze Way								PR7a PR7b		
14	Reduction of speed limit and pedestrian/cycling crossing at key locations along the A44 (from Sandy Lane to Cassington Road)	Improving sustainable transport accessibility and active travel	Critical	Medium term	TBC	TBC	OCC private developers	LTP4:OTS LP1: Improved Transport and Connections (SLE4) LP1 PR: Sustainable Transport (PR4a) LP1 PR: Infrastructure Delivery (PR11)	PR9 PR8	OCC TA (ITP)	
15	Footpaths/cycleways within proposed development sites that link new development to existing and proposed networks.	Improving sustainable transport accessibility and active travel	Critical	Medium term	TBC	TBC	OCC private developers	LTP4:OTS LP1: Improved Transport and Connections (SLE4) LP1 PR: Sustainable Transport (PR4a)	All LP1 PR sites	PRoW Management Plan 2014	
15a	Pedestrian/cycling/wheel chair accessibility from land east of Oxford Road (PR6a) to Water Eaton Park and Ride and Oxford Parkway Station		Critical	Medium term	TBC	TBC	OCC private developers	LP1 PR: Infrastructure Delivery (PR11) LP1 PR: Infrastructure	PR6a	TA (ITP)	
15b	Pedestrian/cycling/wheel chair accessibility from land west of Oxford Road (PR6b) to the employment opportunities at Oxford's Northern Gateway	Improving sustainable transport accessibility and active travel	Critical	Medium term	TBC	TBC	OCC private developers	LTP4:OTS LP1: Improved Transport and Connections (SLE4) LP1 PR: Sustainable Transport (PR4a) LP1 PR: Infrastructure Delivery (PR11)	PR6b	TA (ITP)	
15c	Pedestrian/cycling/wheel chair accessibility across A4165 from Land west of Oxford Road (PR6b) to services and facilities at Land East of Oxford Road (PR6a) and Oxford Parkway		Critical	Medium term	TBC	TBC	OCC private developers	LP1 PR: Infrastructure	PR6b	TA (ITP)	
15d	Footway along southbound carriage way of Bicester Road	Improving sustainable transport accessibility and active travel	Critical	Medium term	TBC	TBC	OCC private developers	LTP4:OTS LP1: Improved Transport and Connections (SLE4) LP1 PR: Sustainable Transport (PR4a)	PR7a	TA (ITP)	

No.	Projects	Main aim	Priority Critical Necessary Desirable	Phasing St 2018- 2021 Mt 2021 - 2026 Lt 2026 - 2031	Costs (where known)	Funding (where known)	Main Delivery Partners	Policy links (LP1, LTP & Emerging LP1 PR Policies)	LP1 PR site policy	Source	Delivery status
								LP1 PR: Infrastructure Delivery (PR11) LP1 PR: Infrastructure			
15e	Pedestrian/cycling/wheel chair accessibility to Oxford Parkway, Water Eaton P&R, across to Bicester Road and to formal sports pitches on site	Improving sustainable transport accessibility and active travel	Critical	Medium term	TBC	TBC	OCC private developers	LTP4:OTS LP1: Improved Transport and Connections (SLE4) LP1 PR: Sustainable Transport (PR4a) LP1 PR: Infrastructure Delivery (PR11)	PR7a	CDC	
15f	Walking/cycling/wheelchair accessibility from land at Stratfield Farm (PR7b) to Land east of the A44 (PR8) (including suitable crossing over the Oxford Canal)	Improving sustainable transport accessibility and active travel	Critical	Medium term	TBC	TBC	OCC private developers	LP1 PR: Infrastructure Delivery (PR11)	PR7b PR8	TA (ITP)	
15g	Walking/cycling/wheelchair accessibility from land at Stratfield Farm (PR7b) to key facilities on the A4165 including proposed sporting facilities at Land South East Kidlington (PR7a) and Oxford Parkway Canal)	Improving sustainable transport accessibility and active travel	Critical	Medium term	TBC	TBC	OCC private developers	LTP4:OTS LP1: Improved Transport and Connections (SLE4) LP1 PR: Sustainable Transport (PR4a) LP1 PR: Infrastructure Delivery (PR11) LP1 PR: Infrastructure	PR7b	CDC	
15h	Create pedestrian, cycle and wheelchair friendly crossings which link new development at Land South East of Woodstock to existing and proposed networks including Oxford Road and Campsfield Road.	Improving sustainable transport accessibility and active travel	Critical	Medium term	TBC		OCC private developers		PR10	CDC	
15i	Potential closure/unadoption of Sandy Lane to form green cycle/pedestrian route linking the A44 and	Improving sustainable transport accessibility and active	Critical	Medium term	TBC	TBC	OCC private developers	LTP4:OTS LP1: Improved Transport and Connections (SLE4) LP1 PR: Sustainable	PR8	TA (ITP)	

No.	Projects	Main aim	Priority Critical Necessary Desirable	Phasing St 2018- 2021 Mt 2021 - 2026 Lt 2026 - 2031	Costs (where known)	Funding (where known)	Main Delivery Partners	Policy links (LP1, LTP & Emerging LP1 PR Policies)	LP1 PR site policy	Source	Delivery status
	the A4260. This will be the central spine of a network of footpaths/cycle ways through Land east of the A44 (PR8) and it will be cycle/pedestrian/wheelchair accessible (Subject to consultation with OCC)	travel						Transport (PR4a) LP1 PR: Infrastructure Delivery (PR11) LP1 PR: Infrastructure			
15j	New walking and cycling routes from Land West of Yarnton (PR9) through Yarnton	Improving sustainable transport accessibility and active travel	Critical	Medium term	TBC	TBC	OCC private developers	LTP4:OTS LP1: Improved Transport and Connections (SLE4) LP1 PR: Sustainable Transport (PR4a)	PR9	TA (ITP)	
15k	Pedestrian, cycle and wheelchair connections between Land South East of Woodstock and Woodstock including provision and improvement along the A44	Improving sustainable transport accessibility and active travel	Critical	Medium term	TBC	TBC	OCC private developers	LP1 PR: Infrastructure Delivery (PR11) LP1 PR: Infrastructure	PR10	TA (ITP)	
15l	Pedestrian, cycle and wheelchair connections across the site linking the public open space with the wider footpath network and A44 cycle route via new crossing points over the A44 and Upper Campsfield Road	Improving sustainable transport accessibility and active travel	Critical	Medium term	TBC	TBC	OCC private developers	LTP4:OTS LP1: Improved Transport and Connections (SLE4) LP1 PR: Sustainable Transport (PR4a) LP1 PR: Infrastructure Delivery (PR11) LP1 PR: Infrastructure	PR10	CDC	
15m	New public bridleways suitable for pedestrians, all-weather cycling, wheelchair use and horse riding, and connecting with existing public right of way network including existing bridleway at	Improving accessibility and active travel	Desirable	Medium term	TBC	TBC	OCC private developers	LTP4:OTS LP1: Improved Transport and Connections (SLE4) LP1 PR: Sustainable Transport (PR4a) LP1 PR: Infrastructure Delivery (PR11) LP1 PR: Infrastructure	PR9	CDC	

No.	Projects	Main aim	Priority Critical Necessary Desirable	Phasing St 2018- 2021 Mt 2021 - 2026 Lt 2026 - 2031	Costs (where known)	Funding (where known)	Main Delivery Partners	Policy links (LP1, LTP & Emerging LP1 PR Policies)	LP1 PR site policy	Source	Delivery status
	Dolton Lane.										
15n	Public vehicular, cycle, pedestrian and wheelchair connectivity within the Land West of Yarnton site to services and facilities in Yarnton including William Fletcher Primary School, to the allocated site to the east of the A44 (Policy PR8) and to existing or new points of connection off-site and to existing or potential public transport services.	Ensure safe access and integration with existing road network	Critical	Medium term	TBC	TBC	OCC private developers	LTP4:OTS LP1: Improved Transport and Connections (SLE4) LP1 PR: Sustainable Transport (PR4a) LP1 PR: Infrastructure Delivery (PR11) LP1 PR: Infrastructure	PR9	OCC	
15o	Creation of routes/green infrastructure links to ensure a layout that affords good access to Woodstock	Ensuring integration with exiting development and transport networks, improving accessibility and active travel	Critical	Medium term	TBC	TBC	OCC private developers	LTP4:OTS LP1: Improved Transport and Connections (SLE4) LP1 PR: Sustainable Transport (PR4a) LP1 PR: Infrastructure Delivery (PR11) LP1 PR: Infrastructure	PR10	CDC	
16	Vehicular spine route through Land East of the A44 (suitable for use by buses)	Reduce the proportion and overall number of car journeys and help deliver the transport changes provided for by the Oxford Transport Strategy.	Critical	Medium term	TBC	TBC	OCC private developers	LTP4:OTS LP1: Improved Transport and Connections (SLE4) LP1 PR: Sustainable Transport (PR4a) LP1 PR: Infrastructure Delivery (PR11)	PR8	TA (ITP)	
17	Highways Works to Kidlington Roundabout/Oxford Road to enable site access for Land at	Ensure safe access and integration with existing road network	Critical	Medium term	TBC	TBC	OCC private developers	LP1 PR: Infrastructure Delivery (PR11)	PR7b	OCC	

No.	Projects	Main aim	Priority Critical Necessary Desirable	Phasing St 2018- 2021 Mt 2021 - 2026 Lt 2026 - 2031	Costs (where known)	Funding (where known)	Main Delivery Partners	Policy links (LP1, LTP & Emerging LP1 PR Policies)	LP1 PR site policy	Source	Delivery status
	Stratfield Farm										
Education											
18	Primary School 2FE at Land East of Oxford Road	Expand the schools and colleges provision to match the needs of residents and businesses.	Critical	Medium term	TBC	TBC	OCC Private sector developers	LP1: Meeting education needs (BSC7) LP1 PR: Infrastructure Delivery (PR11)	PR6a PR6b PR7a PR7b	OCC	
19	Primary School 3FE at Land East of the A44		Critical	Medium term	TBC	TBC	OCC Private sector developers	LP1: Meeting education needs (BSC7) LP1 PR: Infrastructure Delivery (PR11)	PR8	OCC	
20	Additional playing field land (c.1.5ha) to be provided at William Fletcher Primary School to facilitate a 0.5 FE expansion of the school to a 2 FE.	Expand the schools and colleges provision to match the needs of residents and businesses.	Critical	Medium term	TBC	TBC	OCC Private sector developers	LP1: Meeting education needs (BSC7) LP1 PR: Infrastructure Delivery (PR11)	PR9	OCC	
21	Primary School 2FE at Land South East of Woodstock		Critical	Medium term	TBC	TBC	OCC Private sector developers	LP1: Meeting education needs (BSC7) LP1 PR: Infrastructure Delivery (PR11)	PR10	OCC	
22	Secondary school (900-place) at Land East of the A44 with playing pitches located to help maintain a gap between the development and Begbroke village		Critical	Medium term	TBC	TBC	OCC Private sector developers	LP1: Meeting education needs (BSC7) LP1 PR: Infrastructure Delivery (PR11)	All sites	OCC	
23	SEN and early years school provision to meet projected needs either		Critical	Medium term	TBC	TBC	OCC Private sector developers	LP1: Meeting education needs (BSC7)	All sites	OCC	

No.	Projects	Main aim	Priority Critical Necessary Desirable	Phasing St 2018- 2021 Mt 2021 - 2026 Lt 2026 - 2031	Costs (where known)	Funding (where known)	Main Delivery Partners	Policy links (LP1, LTP & Emerging LP1 PR Policies)	LP1 PR site policy	Source	Delivery status
	on site (including land) or adequate contributions to enable existing facilities to expand.							LP1 PR: Infrastructure Delivery (PR11)			
Utilities											
24	Water supply links and network upgrades	Ensure utilities infrastructure grows at the same rate as communities	Critical	Short to medium term	Costs to be determined as individual development comes forward	To be funded by TW and private developers	Thames Water Private sector developers	LP1: Public Service and Utilities (BSC9) LP1: Water Resources (ESD8) LP1 PR: Infrastructure Delivery (PR11)	All sites	Thames Water on LP1 IDP update	TW currently preparing AMP7 (2020-2025) which will provide specification of upgrades. To be funded and provided as development comes forward.
25	Sewerage links and treatment works upgrade										
26	Oxford WwTW upgrade potential - TBC		Critical	Short to medium term							
27	Woodstock WwTW upgrade										
28	Water conservation measures	Promote sustainable use of water: Maintaining quality and adequate resources	Critical	Short to medium term	Costs to be determined as individual development comes forward	To be funded by TW and private developers	Thames Water Private sector developers	LP1: Water Resources (ESD8) LP1: Protection of Oxford Meadows SAC (ESD9) LP1 PR: Infrastructure Delivery (PR11)	All sites		Developers to engage with TW to draw up water and drainage strategies outlining the developments water and waste water infrastructure.
29	Agreement in principle needed with DNO (Southern Electric Power Distribution) for any modification to overhead lines or development beneath overhead lines/undergrounding of overhead lines in relation to any development site.	Ensure utilities infrastructure grows at the same rate as communities	Critical	Short to medium term	Costs to be determined as individual development comes forward	To be funded by SEPD and private developers	SEPD Private sector developers	LP1: Public Service and Utilities (BSC9) LP1 PR: Infrastructure Delivery (PR11)	PR6a PR6b PR6c PR7a PR8 PR9	SEPD Consultation Nov.16-Jan17 Consultation	

No.	Projects	Main aim	Priority Critical Necessary Desirable	Phasing St 2018- 2021 Mt 2021 - 2026 Lt 2026 - 2031	Costs (where known)	Funding (where known)	Main Delivery Partners	Policy links (LP1, LTP & Emerging LP1 PR Policies)	LP1 PR site policy	Source	Delivery status
					d						
Flood risk											
30	Agreement in principle from TW that foul drainage from the site will be accepted into their network as part of any planning application	Reducing potential flooding and pollution risks from surface water.	Critical	Short to medium term	Costs to be determined as individual development comes forward	TW Private sector developers	TW Private sector developers	LP1: Sustainable Flood Risk Management (ESD6) LP1: Sustainable Drainage Systems (SuDs) (ESD7) LP1: Water Resources (ESD8) LP1: Protection of Oxford Meadows SAC (ESD9)	All	SFRA L2May 2017	
31	Site specific FRA with detailed analysis and ground investigation to inform SuDS techniques and demonstrating suitable dry site access and egress for each development site.		Critical	Short to medium term	Costs to be determined as individual development comes forward	Private sector developers	EA TW Private sector developers	LP1 PR: Infrastructure Delivery (PR11)	All	SFRA L2May 2017	
32	Provision of blue corridors for public open space/ recreation within those areas of the site in FZ 3		Critical	Short to medium term	comes forward	Private sector developers	EA Private sector developers		PR6a PR7a PR8	SFRA L2May 2017	
Emergency and rescue services											
-	No known schemes	N/A	N/A	N/A	N/A	N/A	N/A	N/A	N/A	N/A	N/A
Health											
33	Provision of GP health facilities: either through redevelopment of Exeter Hall to accommodate existing practices in larger premises as a preferred approach or through Local Centre space allocated as part of PR6a and PR8.	Ensure health infrastructure grows at the same rate as communities	Critical	Medium to Long term	TBC	OCCG Private developers	OCC Private developers	LP1: Securing health and well being (BSC8) LP1 PR: Infrastructure Delivery (PR11)	PR6a PR6b PR7a PR7b PR8 PR9	OCCG CDC	

No.	Projects	Main aim	Priority Critical Necessary Desirable	Phasing St 2018- 2021 Mt 2021 - 2026 Lt 2026 - 2031	Costs (where known)	Funding (where known)	Main Delivery Partners	Policy links (LP1, LTP & Emerging LP1 PR Policies)	LP1 PR site policy	Source	Delivery status
34	Contribute to provision of GP health facilities in near Woodstock either as part of WODC resolution to approve application 16/01364/OUT or through WODC emerging Local Plan.	Ensure health infrastructure grows at the same rate as communities	Critical	Medium to Long term	TBC	OCCG Private developers	OCC Private developers	LP1: Securing health and well being (BSC8) LP1 PR: Infrastructure Delivery (PR11)	PR10	CDC	
Community infrastructure											
35	Sports hall at PR8 Secondary School for shared community use – one additional 4 court sports hall to Sport England specification 34.5 x 20 x 7.5 (690 sq m)	Ensure social infrastructure grows at the same rate as communities and there are opportunities for culture and leisure	Necessary	Medium Term	TBC	Private developers	OCC CDC Private developers	LP1: Indoor Sport Recreation and Community Facilities (BSC12) LP1 PR: Infrastructure Delivery (PR11)	All sites	CDC OCC	
36	Additional swimming pool space by replacement pool of 25m x 6 lane pool plus teaching pool at Kidlington and Gosford Leisure Centre		Necessary	Long Term	TBC	Private developers	CDC Private developers	LP1: Indoor Sport Recreation and Community Facilities (BSC12) LP1 PR: Infrastructure Delivery (PR11)	All sites	CDC	
37	Community building as part of onsite local centre at Land East of Oxford Road	Creation of a sustainable, mixed use development which provides opportunities for community cohesion	Necessary	Long Term	TBC	Private developers	CDC Private developers	LP1: Indoor Sport Recreation and Community Facilities (BSC12) LP1 PR: Infrastructure Delivery (PR11)	PR6a PR6b		
38	Community building as part of onsite local centre at Land East of A44		Necessary	Long Term	TBC	Private developers	CDC Private developers	LP1: Indoor Sport Recreation and Community Facilities (BSC12) LP1 PR: Infrastructure Delivery (PR11)	PR8		
39	Extension to Kidlington Cemetery	Ensure social infrastructure grows at the same rate as communities	Necessary	Medium to Long terms	TBC	TBC	Kidlington PC CDC Private developer	LP1: Indoor Sport Recreation and Community Facilities (BSC12) LP1 PR: Infrastructure Delivery (PR11)	PR7a		

No.	Projects	Main aim	Priority Critical Necessary Desirable	Phasing St 2018- 2021 Mt 2021 - 2026 Lt 2026 - 2031	Costs (where known)	Funding (where known)	Main Delivery Partners	Policy links (LP1, LTP & Emerging LP1 PR Policies)	LP1 PR site policy	Source	Delivery status
Open space, recreation and biodiversity											
40	Oxford Canal – Improvement to towpath infrastructure	Ensure social infrastructure grows at the same rate as communities	Necessary	Medium to Long term	TBC	Private developers	CDC Private developers	LP1: Open Space, Outdoor Sport Recreation Provision (BSC10) LP1: The Oxford Canal (ESD16) Local Standards of Provision - Outdoor Recreation (BSC11) Green Infrastructure (ESD17) LP1 PR: Infrastructure Delivery (PR11)		Canal & River Trust Nov.16- Jan17 Consultation	
41	Compensatory land for open space, countryside access and improvements	Compensatory improvements to Green Belt land environmental quality and accessibility d	Critical	Short to Medium term	TBC	Private developers	CDC Private developers	LP1: Open Space, Outdoor Sport Recreation Provision (BSC10) Local Standards of Provision - Outdoor Recreation (BSC11) Green Infrastructure (ESD17) LP: Oxford Green Belt (ESD14)	PR6a PR7a PR7b PR8 PR9	CDC	
41a	c.16 ha at Land east of the Oxford Road		Critical	Short to Medium term	TBC	Private developers	CDC Private developers	LP1 PR: The Oxford Green Belt (PR3) LP1 PR: Infrastructure Delivery (PR11)	PR6a	CDC	
41b	c. 21.45ha at Land South East of Kidlington		Critical	Short to Medium term	TBC	Private developers	CDC Private developers		PR7a	CDC	
41c	c. 6.80 ha at Land at Stratfield Farm		Critical	Short to Medium term	TBC	Private developers	CDC Private developers		PR7b	CDC	
41d	c. 79 ha at Land East of the A44		Critical	Short to Medium term	TBC	Private developers	CDC Private developers		PR8	CDC	
41e	c. 82ha at Land West of Yarnton		Critical	Short to Medium term	TBC	Private developers	CDC Private developers		PR9	CDC	
42	c. 32ha of compensatory land to ensure the protection of the Blenheim Villa SAM and the setting of Blenheim Palace WHS and Grade 1 Registered Park and Gardens	Compensatory improvements for the protection and improvement of historic assets	Critical	Short to Medium term	TBC	Private developers	CDC OCC ICOMOS Heritage England Private developers	LP1: The Character of the Built and Historic Environment (ESD15) LP1 PR: The Oxford Green Belt (PR3) LP1 PR: Infrastructure Delivery (PR11)	PR10	CDC	

No.	Projects	Main aim	Priority Critical Necessary Desirable	Phasing St 2018- 2021 Mt 2021 - 2026 Lt 2026 - 2031	Costs (where known)	Funding (where known)	Main Delivery Partners	Policy links (LP1, LTP & Emerging LP1 PR Policies)	LP1 PR site policy	Source	Delivery status
43	Provision of formal sports, play areas and allotments to adopted standards	Ensure open space and amenity infrastructure grows at the same rate as communities and current deficiencies in provision are addressed	Necessary	Short to Long term	TBC	Private developers	CDC Private developers	LP1: Open Space, Outdoor Sport Recreation Provision (BSC10) Local Standards of Provision - Outdoor Recreation (BSC11) Green Infrastructure (ESD17)	All sites	CDC	
43a	Formal sport pitches provision at Land South East Kidlington (PR7a) including: 2 3G football pitches and 1 cricket ground		Necessary	Medium term	TBC	Private developers	CDC Private developers		PR7a	CDC	
43b	Converting existing Hockey AGP at Kidlington and Gosford Leisure Centre to 3G, and increasing its size.	Ensure open space and amenity infrastructure grows at the same rate as communities and current deficiencies in provision are addressed	Necessary	Medium term	TBC	Private developers		LP1: Improved Transport and Connections (SLE4) LP1 PR: Sustainable Transport (PR4a) LP1 PR: Infrastructure Delivery (PR11)	All LP1 PR sites	CDC	
43c	Marked running routes associated with both existing green space and new open space on strategic sites		Necessary	Medium term	TBC	Private developers	CDC Private developers		All LP1 PR sites	CDC	
43d	Golf course relocation - if relocation needed to be delivered at Land at Frieze Way Farm PR6c		TBC	TBC	TBC	Private developers	CDC Private developers		PR6b PR6c	CDC	
44	Amenity open space, natural and semi natural green space and Parks and Gardens to be provided as part of development in accordance to standards	Ensure open space and amenity infrastructure grows at the same rate as communities and current deficiencies in provision are addressed	Necessary	Short to Long term	TBC	Private developers CDC	CDC Private sector developers	LP1: Open Space, Outdoor Sport Recreation Provision (BSC10) Local Standards of Provision - Outdoor Recreation (BSC11) Green Infrastructure (ESD17) LP1 PR: Infrastructure Delivery (PR11)	All LP1 PR Sites	CDC	To be delivered through: • Development sites through the planning application process in accordance to Local Plan requirements and Tables 8 and 9.
44a	Extension to Cutteslowe Park (c.11ha) including land set aside for the creation of wildlife habitats and for nature trail/circular walks accessible from the new	Provision of open space and green infrastructure to meet growth needs and addressing	Desirable	Short to Long term	TBC	TBC	CDC Private sector developers		LP1: Open Space, Outdoor Sport Recreation Provision (BSC10) Local Standards of Provision - Outdoor Recreation (BSC11)	PR6a	CDC

No.	Projects	Main aim	Priority Critical Necessary Desirable	Phasing St 2018- 2021 Mt 2021 - 2026 Lt 2026 - 2031	Costs (where known)	Funding (where known)	Main Delivery Partners	Policy links (LP1, LTP & Emerging LP1 PR Policies)	LP1 PR site policy	Source	Delivery status
	primary school	changing attitudes towards food growing.						Green Infrastructure (ESD17) LP1 PR: Infrastructure Delivery (PR11)			
44b	Allotments to be provided as in accordance to LP1	Provision of open space and green infrastructure to meet growth needs and addressing changing attitudes towards food growing.	Desirable	Short to Long term	TBC	TBC	CDC Private sector developers	LP1: Open Space, Outdoor Sport Recreation Provision (BSC10) Local Standards of Provision - Outdoor Recreation (BSC11) Green Infrastructure (ESD17) LP1 PR: Infrastructure Delivery (PR11)	PR6a PR6b PR9 PR8 PR10	CDC	To be delivered through policy requirement for all sites comprising 275 + dwellings.
44c	Retention of c. 3 ha of land in agricultural as part of Land East of the Oxford Road (PR6a)	Provision of open space and green infrastructure to meet growth needs and addressing changing attitudes towards food growing.	Desirable	Medium term	TBC	TBC	CDC Private sector developers	LP1: Open Space, Outdoor Sport Recreation Provision (BSC10) Local Standards of Provision - Outdoor Recreation (BSC11) Green Infrastructure (ESD17) LP1 PR: Infrastructure Delivery (PR11)	PR6a	CDC	
44d	Retention of c. 12 ha of land in agricultural as part of Land East of the A44 (PR8)	Provision of open space and green infrastructure to meet growth needs and addressing changing attitudes towards food growing.	Desirable	Medium term	TBC	TBC	CDC Private sector developers	LP1: Open Space, Outdoor Sport Recreation Provision (BSC10) Local Standards of Provision - Outdoor Recreation (BSC11) Green Infrastructure (ESD17) LP1 PR: Infrastructure Delivery (PR11)	PR8	CDC	
44e	Protection of the orchard and waterbody at St. Frideswide Farm	Provision of open space and green infrastructure to meet growth needs and addressing changing attitudes towards food growing.	Desirable	Medium term	TBC	TBC	CDC Private sector developers	LP1: Open Space, Outdoor Sport Recreation Provision (BSC10) Local Standards of Provision - Outdoor Recreation (BSC11) Green Infrastructure (ESD17) LP1 PR: Infrastructure Delivery (PR11)	PR6a	CDC	
44f	Enhancements to woodland area (along northern boundary of PR6b)	Provision of open space and green infrastructure to meet growth needs and addressing changing attitudes towards food growing.	Desirable	Medium term	TBC	TBC	CDC Private sector developers	LP1: Open Space, Outdoor Sport Recreation Provision (BSC10) Local Standards of Provision - Outdoor Recreation (BSC11) Green Infrastructure (ESD17) LP1 PR: Infrastructure Delivery (PR11)	PR6b	CDC	
44g	Protection and improvement of Orchard in Startfield Farm	Provision of open space and green infrastructure to meet growth needs and addressing changing attitudes towards food growing.	Necessary	Medium term	TBC	TBC	CDC Private sector developers	LP1: Open Space, Outdoor Sport Recreation Provision (BSC10) Local Standards of Provision - Outdoor Recreation (BSC11) Green Infrastructure (ESD17) LP1 PR: Infrastructure Delivery (PR11)	PR7b	CDC	
44h	Public open green space as informal canal side parkland on 21 hectares of land as shown	Provision of open space and green infrastructure to meet growth needs and addressing changing attitudes towards food growing.	Necessary	Medium term	TBC	TBC	CDC Private sector developers	LP1: Open Space, Outdoor Sport Recreation Provision (BSC10) Local Standards of Provision - Outdoor Recreation (BSC11) Green Infrastructure (ESD17) LP1 PR: Infrastructure Delivery (PR11)	PR8	CDC	
44i	New community woodland to the north west of PR9 developable area and to the east of Dolton Lane	Provision of open space and green infrastructure to meet growth	Necessary	Medium term	TBC	TBC	CDC Private sector developers	LP1: Open Space, Outdoor Sport Recreation Provision (BSC10) Local Standards of	PR9	CDC	

No.	Projects	Main aim	Priority Critical Necessary Desirable	Phasing St 2018- 2021 Mt 2021 - 2026 Lt 2026 - 2031	Costs (where known)	Funding (where known)	Main Delivery Partners	Policy links (LP1, LTP & Emerging LP1 PR Policies)	LP1 PR site policy	Source	Delivery status
44j	New community woodland within Land South East of Woodstock (PR10)	needs and addressing changing attitudes towards food growing.	Necessary	Medium term	TBC	TBC	CDC Private sector developers	Provision - Outdoor Recreation (BSC11) Green Infrastructure (ESD17) LP1 PR: Infrastructure Delivery (PR11)	PR10	CDC	
45	Green Infrastructure corridors and active travel : Green Infrastructure network connecting wildlife corridors (including through developable areas), improving existing corridors and improving and protecting hedgerows network and protection of mature trees	Provision of open space and green infrastructure to meet growth needs and facilitate active travel	Necessary	Short to Long term	TBC	TBC	CDC Private sector developers	LP1: Open Space, Outdoor Sport Recreation Provision (BSC10) Local Standards of Provision - Outdoor Recreation (BSC11) Green Infrastructure (ESD17) LP1: Improved Transport and Connections (SLE4) LP1 PR: Sustainable Transport (PR4a) LP1 PR: Infrastructure Delivery (PR11)	All sites	CDC	
45a	Green infrastructure corridor (c.8 ha) incorporating a pedestrian, wheelchair and all-weather cycle route along PR6a' s eastern boundary. Connecting Cutteslowe Park with Oxford Parkway Railway Station/Water Eaton Park and Ride and provide connection with existing PRow network		Necessary	Medium term	TBC	TBC	CDC BBOWT Private sector developers		PR6a	CDC	
45b	Green infrastructure network with connected wildlife corridors, including within the developable area. The improvement of the existing network including hedgerows between the proposed Community Woodland at PR9 and Begbroke	Provision of open space and green infrastructure to meet growth needs	Necessary	Medium term	TBC	TBC	CDC OCC BBOWT Private sector developers	LP1: Open Space, Outdoor Sport Recreation Provision (BSC10) Local Standards of Provision - Outdoor Recreation (BSC11) Green Infrastructure (ESD17) LP1: Improved Transport and	PR9		

No.	Projects	Main aim	Priority Critical Necessary Desirable	Phasing St 2018- 2021 Mt 2021 - 2026 Lt 2026 - 2031	Costs (where known)	Funding (where known)	Main Delivery Partners	Policy links (LP1, LTP & Emerging LP1 PR Policies)	LP1 PR site policy	Source	Delivery status
	Wood							Connections (SLE4) LP1 PR: Sustainable Transport (PR4a) LP1 PR: Infrastructure Delivery (PR11)			
45c	New publicly accessible Local Nature Reserve(c. 29 ha) based on Rowel Brook at Land East of the A44	Provision of open space and green infrastructure to meet growth needs and facilitate active travel	Necessary	Medium term	TBC	TBC	CDC OCC BBOWT Private sector developers	LP1: Open Space, Outdoor Sport Recreation Provision (BSC10) Local Standards of Provision - Outdoor Recreation (BSC11)	PR8	CDC	
45d	Protection and enhancement of Sandy Lane and Yarnton Lane as green links and wildlife corridors and wildlife connectivity from Sandy Lane to the proposed Local Nature Reserve at Land east of the A44 (PR8)		Necessary	Medium term	TBC	TBC	CDC OCC BBOWT Private sector developers	Green Infrastructure (ESD17) LP1: Improved Transport and Connections (SLE4) LP1 PR: Sustainable Transport (PR4a) LP1 PR: Infrastructure Delivery (PR11)	PR8	CDC	
45e	Green infrastructure network with connected wildlife corridors, including within the residential area and alongside the railway line. Includes improvement of the existing network including within the Lower Cherwell CTA and to the Rushy Meadows SSI, the Meadows West of the Oxford Canal Local Wildlife Site and to Stratfield Farm (PR7b)	Provision of open space and green infrastructure to meet growth needs and facilitate active travel	Necessary	Medium term	TBC	TBC	CDC OCC BBOWT Private sector developers	LP1: Open Space, Outdoor Sport Recreation Provision (BSC10) Local Standards of Provision - Outdoor Recreation (BSC11) Green Infrastructure (ESD17) LP1: Improved Transport and Connections (SLE4) LP1 PR: Sustainable Transport (PR4a) LP1 PR: Infrastructure Delivery (PR11)	PR8	CDC	
45f	Nature conservation area (c.6ha) with potential to link to and extend Stratfield Brake DWS	Enhance natural environment by maximising opportunities for improving biodiversity;	Necessary	Short to Long term	TBC	TBC	CDC OCC BBOWT Private sector developers	LP1: Protection and Conservation of Biodiversity and the Natural Environment (ESD10) Conservation Target	PR7b	CDC	To be delivered following the progression of the Strategic Sites through the planning

No.	Projects	Main aim	Priority Critical Necessary Desirable	Phasing St 2018- 2021 Mt 2021 - 2026 Lt 2026 - 2031	Costs (where known)	Funding (where known)	Main Delivery Partners	Policy links (LP1, LTP & Emerging LP1 PR Policies)	LP1 PR site policy	Source	Delivery status
		including maintenance, restoration and creation of BAP habitats						Areas (ESD11) Green Infrastructure (ESD17) LP1 PR: Infrastructure Delivery (PR11)			application process
45g	Community Woodland east of Dolton Lane PR9/Community Woodland on the western side of PR10		Necessary	Short to Long term	TBC	TBC	CDC OCC BBOWT Private sector developers		PR9	CDC	
45h	Local Nature Reserve based on Rowel Brook at Land East of the A44 (PR8)	Enhance natural environment by maximising opportunities for improving biodiversity; including maintenance, restoration and creation of BAP habitats	Necessary	Short to Long term	TBC	TBC	CDC OCC BBOWT Private sector developers	LP1: Protection and Conservation of Biodiversity and the Natural Environment (ESD10)	PR8	CDC	
45i	Local Nature Reserve based on Frogwell down Lane DWS and educational opportunities for PS (PR9)		Necessary	Short to Long term	TBC	TBC	CDC OCC BBOWT Private sector developers	Conservation Target Areas (ESD11) Green Infrastructure (ESD17) LP1 PR: Infrastructure Delivery (PR11)	PR9	CDC	
45j	Local Nature Reserve at Land West of Yarnton (c.7.8ha) accessible to William Fletcher Primary School		Necessary	Short to Long term	TBC	TBC	CDC OCC BBOWT Private sector developers	LP1: Protection and Conservation of Biodiversity and the Natural Environment (ESD10)	PR9	CDC	
45k	New nature conservation area accessible by the local community		Necessary	Short to Long term	TBC	TBC	CDC OCC BBOWT Private sector developers	Conservation Target Areas (ESD11) Green Infrastructure (ESD17) LP1 PR: Infrastructure Delivery (PR11)	PR10	CDC	
46	Development proposals for Land East of the A44 (PR8) are required to undertake an investigation of the former land field site south of Sandy Lane to then remediate the site for a use compatible with the proposals and retained uses in the area as detailed in Policy PR8	Establishing if land contamination has the potential to be present on historic land uses and surrounding area and explore remediation	Desirable	Medium Term	TBC	Private developer	CDC EA Private developer	1996 Local Plan Saved Policy: Development on contaminated Land (ENV12)	PR8	CDC	

No.	Projects	Main aim	Priority Critical Necessary Desirable	Phasing St 2018- 2021 Mt 2021 - 2026 Lt 2026 - 2031	Costs (where known)	Funding (where known)	Main Delivery Partners	Policy links (LP1, LTP & Emerging LP1 PR Policies)	LP1 PR site policy	Source	Delivery status
47	Ecological Mitigation and Compensation - habitat creation and management.	Enhance natural environment by providing opportunities to improve biodiversity; including maintenance, restoration and creation of BAP habitats	Necessary	Short to Long term	TBC	TBC	CDC OCC BBOT Private sector developers	LP1: Protection and Conservation of Biodiversity and the Natural Environment (ESD10) Conservation Target Areas (ESD11) Green Infrastructure (ESD17) LP1 PR: Infrastructure Delivery (PR11)	All LP1 PR sites	CDC	To be delivered following the progression of the Strategic Sites through the planning application process
47a	Farmland bird compensation required from proposals for site policies PR6a, PR7a, PR7b, PR9 and PR10								PR6a PR7a PR7b PR9	CDC	
47b	A nature conservation area on c. 12.6 ha of land to the east of the railway line, south of the Oxford Canal and north of Sandy Lane		Necessary	Short to Long term	TBC	TBC	CDC OCC BBOT Private sector developers		PR8	CDC	To be delivered following the progression of the Strategic Sites through the planning application process
47c	Protection and enhancement of existing wildlife corridors, including along Frogwelldown Lane District Wildlife Site and Dolton Lane, and the protection of existing hedgerows and trees	Enhance natural environment by providing opportunities to improve biodiversity; including maintenance, restoration and creation of BAP habitats	Necessary	Short to Long term	TBC	TBC	CDC OCC BBOT Private sector developers	LP1: Protection and Conservation of Biodiversity and the Natural Environment (ESD10) Conservation Target Areas (ESD11) Green Infrastructure (ESD17) LP1 PR: Infrastructure Delivery (PR11)	PR9		
47d	Examination of provision of wildlife corridors over or under the A34 and A4260 (Frieze Way) to Stratfield Break DWS	Enhance natural environment by maximising opportunities for improving biodiversity;	Necessary	Short to Long term	TBC	TBC	CDC OCC BBOT Private sector developers	LP1: Protection and Conservation of Biodiversity and the Natural Environment (ESD10)	PR6b	CDC	
48	Restoration, maintenance, new habitat creation at Lower Cherwell Conservation Target Area	including maintenance, restoration and creation of BAP habitats	Necessary	Short to Long term	TBC	TBC	CDC OCC BBOWT Private sector developers	Conservation Target Areas (ESD11) Green Infrastructure (ESD17) LP1 PR: Infrastructure Delivery (PR11)	PR7b	CDC	

Monitoring Framework

Plan Monitoring Schedule

Policy Reference	Policy Title	Local Plan Indicators	Targets
PR1	Achieving Sustainable Development for Oxford's Needs	4,400 homes – commitments and completions Delivering the Vision, objectives and Policies in the Plan Delivery of the Infrastructure Schedule and Infrastructure Plan requirements	Deliver the requirements of Policy PR1: Sites delivered by 2031 Delivery of Infrastructure requirements
PR2	Housing Mix, Tenure and Size	Net affordable housing completions/acquisitions per tenure, mix and size that specifically meet the needs of Oxford City. -80% affordable/social rent -20% intermediate affordable -25 -30% - 1 bed -30 -35% - 2 bed -30 -35% - 3 bed -5 -10% - 4+ beds Mix of sizes of market homes – create socially mixed and inclusive communities Provision for key workers as part of both affordable and market homes Self-build or self –finish housing	Deliver the requirements of Policy PR2.
PR3	The Oxford Green Belt	Removal of areas of land in association with the strategic development sites PR6a – 32.09 ha PR6b – 31.5 ha PR7a – 10.75 ha PR8 – 111.79 ha PR9 – 17.6 ha PR3a – 7.5 ha PR3b – 0.7 ha	Safeguarding of land beyond plan period for development Establish clear permanent boundaries to the Green Belt

Policy Reference	Policy Title	Local Plan Indicators	Targets
		PR3c – 12.77 ha PR3d – 9.2 ha PR3e – 14.7 ha Safeguarding of land identified in the policy	
PR4a	Sustainable Transport	Strategic sites to provide proportionate financial contributions directly related to the development for: Highway improvements to Infrastructure and services for public transport Provision of land to support implementation of schemes in LTP4, A44/A4260 and other transport mitigation assessment Improved bus service <ul style="list-style-type: none"> • A44/A4144 corridor • A4260/A4165 • Cross corridors: Langford Lane, Frieze Way. 	Deliver policy PR4a: Secure proportionate financial contributions for sustainable transport from strategic sites. Identify schemes for delivery S106 legal agreements for transport delivery with timescales. Include transport provision in masterplans for strategic sites
PR4b	Kidlington Centre	Sustainable transport improvements Associated infrastructure Improve natural and built environment	Deliver Policy PR4b and Kidlington Masterplan
PR5	Green Infrastructure	Protect and enhance green infrastructure (GI) Incorporate existing GI in new layouts Connect existing and new GI Restore and/or recreate habitats in new development Protect existing trees and new planting Provide GI along movement corridors Maintain GI	Deliver Policy PR5: Secure Green Infrastructure improvements

Policy Reference	Policy Title	Local Plan Indicators	Targets
		GI benefits to the Green Belt Multi-functioning GI	
PR6a	Land East of Oxford Road	<p>Deliver 650 dwellings (net) on 24 ha of land</p> <p>Sustainable Development 50% affordable homes 3 Form entry Primary School 0.5 ha Local Centre Formal sports, play areas and allotments 11 hectares of Public green space and extension to Cutteslowe Park</p> <p>Green infrastructure corridor on 8 ha with all public benefits listed in the policy.</p>	<p>Deliver Policy PR6a:</p> <p>Preparation of Development Brief</p>
PR6b	Land West of Oxford Road	Residential completions	<p>Deliver policy PR6b:</p> <p>Preparation of Development Brief</p>
PR6c	Land at Frieze Farm	Residential completions	<p>Deliver policy PR6c:</p> <p>Preparation of Development Brief</p>
PR7a	Land South East of Kidlington	Residential completions	<p>Deliver policy PR7a</p> <p>Preparation of Development Brief</p>
PR7b	Land at Stratfield Farm	Residential completions	<p>Deliver policy PR7b</p> <p>Preparation of</p>

Policy Reference	Policy Title	Local Plan Indicators	Targets
			Development Brief
PR8	Land East of the A44	Residential completions	Deliver policy PR8 Preparation of Development Brief
PR9	Land West of Yarnton	Residential completions	Deliver policy PR9 Preparation of Development Brief
PR10	Land South East of Woodstock	Residential completions	Deliver policy PR10 Preparation of Development Brief
PR11	Infrastructure Delivery	Projects contained in the Infrastructure Schedule accompanying the adopted LP1 PR and their delivery according to its phasing Prepare and provide Infrastructure Schedule updates in cooperation with relevant infrastructure partners	Key Infrastructure to be delivered in accordance with LP1 PR Infrastructure Schedule
PR12a	Delivering Sites and maintaining Housing Supply	Ensuring delivery of sites and demonstrating a 5 year housing land supply	Monitoring of housing delivery and progress of sites in the Council's AMR including 5 year housing land supply calculations
PR12b	Sites Not Allocated in the Partial Review	If delivery of LP1 PR housing falls below 95% of the LP1 PR housing target for a period of 3 years, CDC will publish an action plan and will indicate whether the requirements of Policy PR12b should be triggered.	Deliver LP1 PR site policies in accordance to the Plans Housing Trajectory